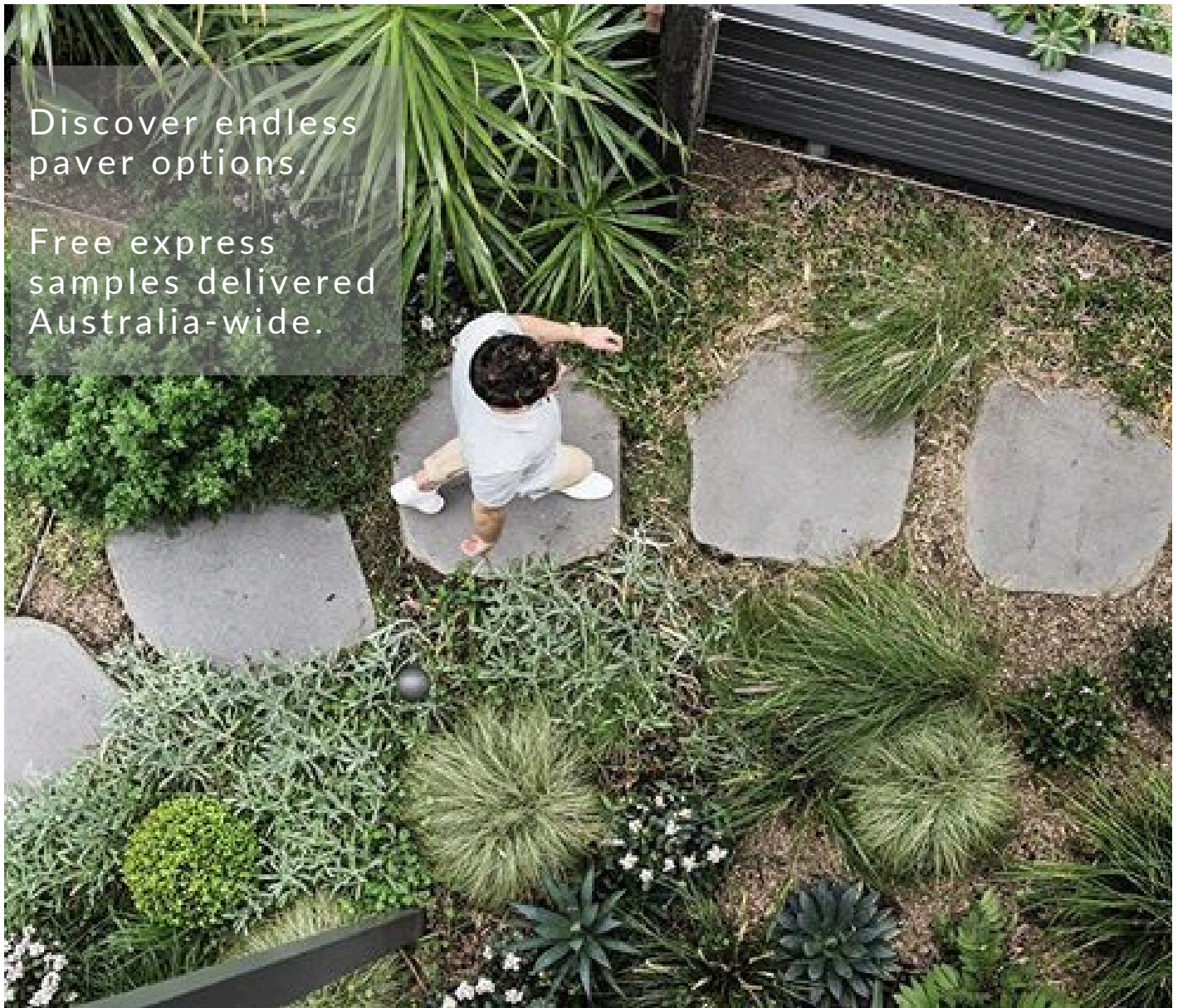


PRODUCT INSTALLATION GUIDE

STEPPING STONES





Discover endless
paver options.

Free express
samples delivered
Australia-wide.

Stepping Stones

Elevate your garden path with the timeless beauty of natural stone.

Our collection of stepping stones features stunning bluestone, sandstone, and travertine, offering a variety of textures and colours to complement any landscape design. Discover the natural elegance and lasting durability of stone.



All tips and guidelines should be taken as general advice and should be used in addition to the relevant Australian standards. These tips and advice are given in good faith. In no way do these replace the service of professional contractors / consultants.



Installation Tips

Installing natural stone pavers requires precision and the right tools to ensure a successful installation. Here is a step-by-step guide along with a list of tools you will need:

Tools Required:

- Measuring tape
- Rubber mallet or wooden block
- Level
- Safety glasses and gloves (recommended for handling materials and using adhesives)
- Dust mask when mixing sand and cement or adhesive and grout.
- Stringline
- Shovel
- Rake





Installation Steps:

Laying Sand & Cement with Crushed Rock 20mm thickness

Preparation:

When purchasing multiple crates of stone pavers, combine them on-site and mix them well to blend the natural colour variations. This will create a more consistent look for your installation.

Step 1: Dig out each size of stepper being positioned - allowing 30mm for crushed rock & 20mm finish height of slurry

Step 2: Mixing The Mortar - Combine 4 White Brick Sand, 1GP cement, lime, and 1 cap of plasticiser. Gradually add water while mixing until you achieve a workable consistency that holds its shape without slumping.

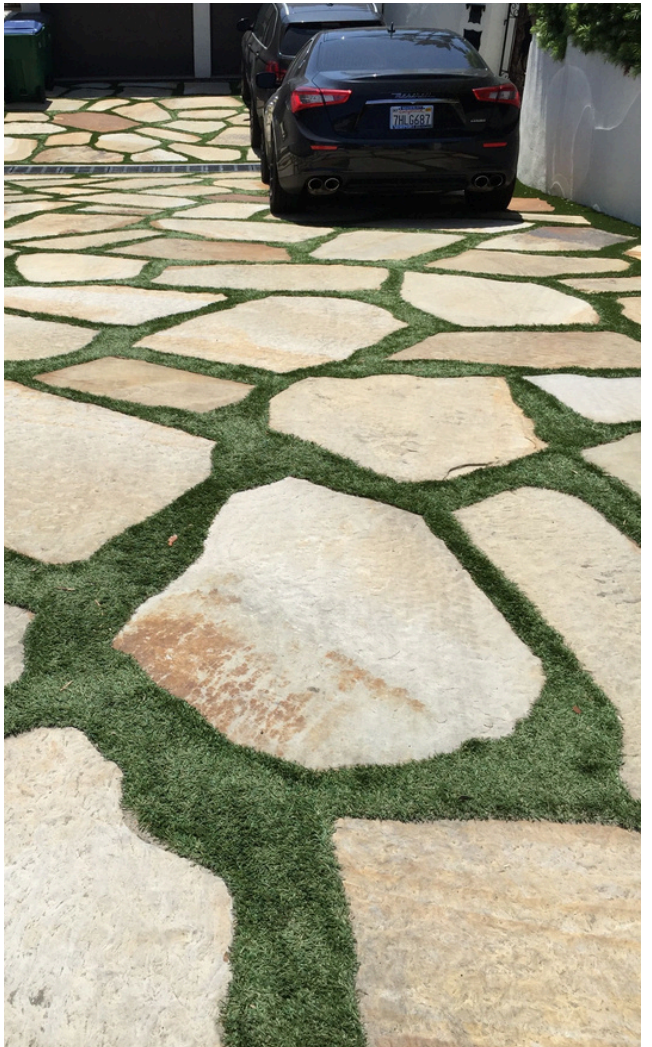
Step 3: Setting Up - Decide on your starting point and paste the back of each stone with a quick drying adhesive before placing it in the mortar mix.

Step 4: Placement Of Stepper- Place each stepper 150mm to 200mm apart. This allows for an easy walking step along your path.

Step 5: Set your string at your required height at the first stepper running your string to where the last stepper finishes at the height required. This will help keep your steppers level.

Step 6: Laying The Steppers- Carefully place each stepper into the mortar, tapping it gently with the rubber mallet and checking its level after each tap.

When purchasing multiple crates of stone pavers, combine them on-site and mix them well to blend the natural colour variations. This will create a more consistent look for your installation.



Installation Steps:

Laying with Crushed Rock 30mm Thickness

Preparation:

When purchasing multiple crates of stone pavers, combine them on-site and mix them well to blend the natural colour variations. This will create a more consistent look for your installation.

Step 1: Dig out each size of stepper being positioned - allowing 30mm for crushed rock. Additional rock may be required as this will be used to obtain finish height. Compact the rock.

Step 2: Setting Up - Decide on your starting point

Step 3: Set your string at your required height at the first stepper running your string to where the last stepper finishes at the height required. This will help keep your steppers level.

Step 4: Placement Of Stepper- Place each stepper 150mm to 200mm apart. This allows for easy walking step along your path. Apply 10-15mm of packing sand, this will allow you to level the stepper.

Note: to obtain more permanent placement you can lay 30mm into sand & cement, packing sand not required

When purchasing multiple crates of stone pavers, combine them on-site and mix them well to blend the natural colour variations. This will create a more consistent look for your installation.



Curing and Cleaning:

Allow approximately 5 days for pavers laid in adhesive or 2 weeks for pavers laid in sand and cement to cure before proceeding with cleaning and sealing.

Clean the sandstone pavers using a mild detergent and water, scrubbing gently with a high pressure cleaner to remove any remaining grout residue or stains.

Rinse thoroughly with clean water to ensure all cleaning agents are removed.

Sealing (if required):

Depending on the type of natural stone and desired level of protection, consider applying a suitable sealer to enhance the appearance and provide additional durability.

Follow the manufacturer's instructions for the specific sealer, applying it evenly and allowing it to dry completely before use.

Remember to always refer to the manufacturer's guidelines for the specific natural stone pavers you are installing, as recommendations may vary. Following these steps and adhering to the directions on adhesive, grout, and sealer products will help ensure a successful and professional-looking installation of your natural stone paving.



All our 20mm & 30mm thick pavers are suitable to use as stepping stones

Maintenance & Cleaning

Like any surface, stone will require a degree of maintenance. The correct sealing from the start is the key to minimal maintenance.

Heavily tracked areas will require more maintenance than those that are seldom used. The main maintenance regime required for stone is regular sweeping and vacuuming.

The use of abrasive, acidic or alkali household detergents should be avoided, as they can remove the tiles surface sealant or in extreme cases damage stone.

Please note: acidic cleaners should not be used, unless professionally recommended.

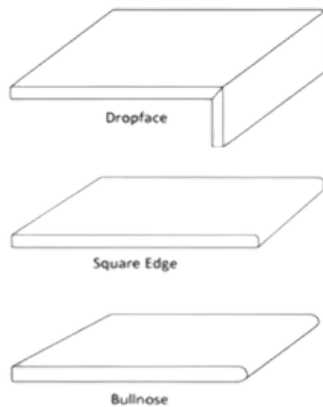
Always use accredited sealers and cleaners.

Check with the team at Stone & Slate Discounts for a recommended sealer for your project.

Since 1986, we've helped countless homeowners translate their dreams into stunning realities. Let Stone & Slate Discounts be your trusted partner.

Edge Profiles

Here are few of the popular pool coping styles we stock: Drop Face Pool Coping, Bullnose Pool Coping & Tumbled Pool Coping.



Product Features



Durable



Non-Slip



Outdoor



Low Heat
Absorption



Low
Maintenance



Project Sizes
Available

Experience the world's finest materials without the hefty price tag: our quarry partnerships unlock exceptional quality at competitive costs.

